

Ronald McDonald House® Charities of Greater Washington, D.C.
2020-2021 Expansion & Renovation



BUILD
HOPE



Wall-breaking Ceremony with Expansion Partners: HKS Architects, James G. Davis Construction, Interface Engineering, Able Moving & Storage Inc., WeWork, and Concentric Security.

**Community
Support**

The Wait Is Over

We smashed through the wall and our wait list. The number 200 represents the number of families we previously had to turn away due to capacity.

Now that expansions of both House programs are complete, we will be able to serve 33% more families than before.

Pictured: The Bittner Family who stayed with us while Winnie received life-saving heart surgery.



Bittner Family



James G. Davis Construction took every precaution to keep their crews safe while renovating and expanding our D.C. House during the COVID-19 pandemic. After more than a year of construction on both Houses, the work sites remain free from positive cases of coronavirus.

Safety



In January 2020, eight months of
renovations began at Ronald McDonald
House® of Washington, D.C.

BUILD
HOPE



The heating, ventilation & air conditioning system was replaced to give each guestroom their own unit, bringing increased comfort to those little ones who have trouble staying warm or are running hot from treatments.

Comfort



The entryway was opened up to create a welcoming reception area on the first floor, where staff are always available to help visitors and guests.

Welcome



Families and volunteer meal groups have always loved our big kitchen. When we renovated to accommodate more families, the kitchen got upgraded, too! Turn the page to see how much more bright and spacious it is now.

Kitchen
Before



With upgraded industrial appliances for longevity and increased performance; a deep freezer to store meals for nights when we don't have a volunteer group; family-only pantries; and an open design, this kitchen is truly the ♥ of our home.

Kitchen
After



Before



After



Six new guest rooms have been added, bringing our total at the DC House to thirty-two, including four isolation suites for transplant patients. In response to the coronavirus, each room has been equipped with a microwave, coffee pot, mini refrigerator, Smart TV, and dinette so that families can easily maintain social distance while still enjoying the comforts of home.

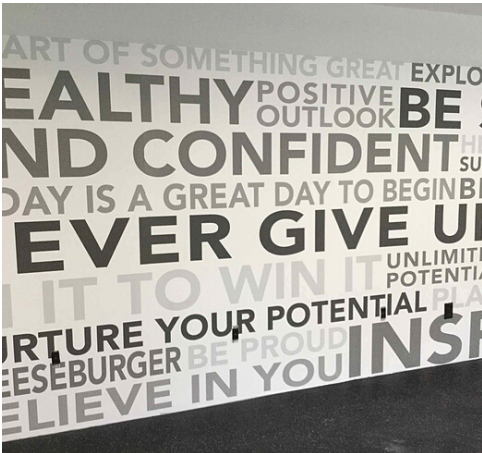
**Guest
Rooms**



Elia and her mom



Alani's family



Borre Family

Family Time

Common areas have been redesigned to support family health, comfort, and interaction. The living room has an inclusive watch area and separate craft and play areas; hallways were brightened, and an old office space was turned into a gym room.



In January 2021, an estimated eight months of construction began on our Ronald McDonald House® of Northern Virginia. Read on to see the changes!

**B U I L D
HOPE**



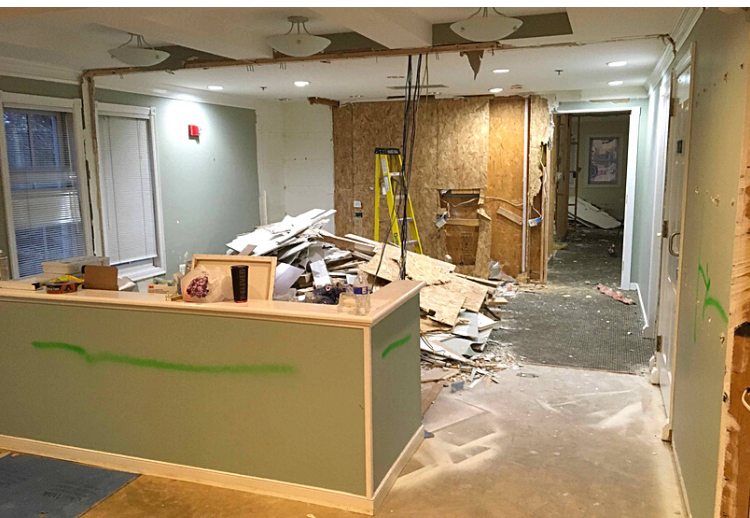
The Ronald McDonald House of Northern Virginia that you know and love had a second floor added to the family wing, helping to triple our capacity.

**Family
Wing**



This brings our total guest suites from 8 to 24, completing our \$5M expansion to better serve the increasing number of families coming to our area for specialized pediatric care.

**Home-away-
from-home**



We made lots of changes to the layout of the NoVA House while staying within its original footprint. One of our three playrooms was turned it into a family pantry adjacent to the kitchen. The area that was formerly a conference room has become the new check-in and reception area. Also, former office space is now six additional guest suites.

**Building
Hope**



Caden and his mom

Serving Families



Mylie's family



In addition, the heating and cooling were re-engineered, and greater emphasis was placed on communal spaces, including larger kitchens, better lounges, outdoor spaces, and significant play space. The House also offers Wi-Fi, daily activities, weekly programs, and meals provided by volunteer groups, all at no cost to families



Ash Family



Newly opened oncology treatment units and the creation of specialized disease centers at major area hospitals will cause a rapid influx of families in need to our Ronald McDonald House programs over the next 2-3 years.

**Growing
Need**



Thanks to the successful completion of both of our Ronald McDonald House program expansions, we are ready to serve this growing population and help even more families in need of a safe, supportive, and affordable “home-away-from-home” while their child is undergoing treatment for pediatric illness at nearby hospitals.

**Mission
Focused**

2020-2021 Expansion Partners



arbee | associates

AVTek Staffing/
Avixa ITS Council

CHARTER
FURNITURE



Dewberry

Dupont



David & Ann
Flanagan Family

HKS

IBTS



Joyce
Agency

Lotus &
Windoware Inc.

Mats inc.

MATTRESS
Warehouse



NEC \ Orchestrating a brighter world

peerless-AV

Precision Doors

Don & Carey
Randall

Sherwin
Williams

Adrian &
Karen Steel

Steelcase

TW Perry



Walmart

wework

Thank you to our Expansion Partners for
helping to make all of this possible!

BUILD
HOPE



RMHC[®]

Greater Washington, DC

Keeping families close[®]

**Learn
More**

Visit: www.rmhcadc.org

Contact: Sarah Quillen, VP
Development & Marketing
at SQuillen@rmhcadc.org